

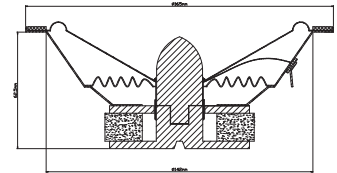
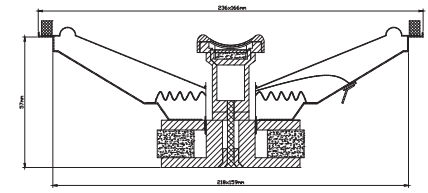
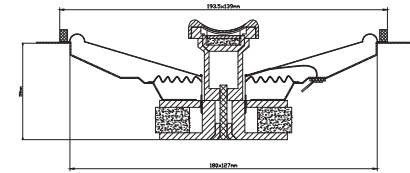
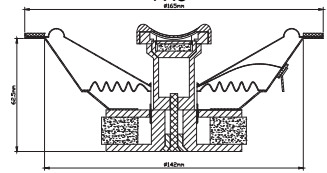
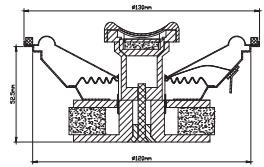
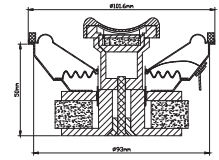
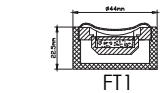
FAZE Series Component & Co-Axial

General Features:

- * Heavy Gauge Steel Basket With Thick Powder Coating, MASSIVE Punched Logo(FX6/FK6/FX69)
- * Custom Made Massive Logo 2 Way Tweeter Plate
- * Built-in 6dB Crossover(Co-Axial)
- * High-Energy Y35 Magnets Assure Sufficient Magnet Force Needed
- * Custom Designed Pole Piece For Low Distortion And Sound Quality
- * Two Piece Custom Paintable Metal Grills(Except FX57)
- * Rugged Construction To Withstand Harsh Mobile Environment
- * Custom Fiber Glass Cone With Butyl Rubber Surround
- * Fully Isolated Tinsel Leads To Eliminate Crosstalk
- * High Quality Cloth Spider With Polyester Fiber
- * 1" High Temperature 100% Pure KSV Voice Coil
- * 20mm Inverted Aluminum Dome Tweeter With Ferro Fluid Cooled V.C.
- * Competition Grade 12dB Crossover(Kit)

Specifications:

Model	FX4	FX5	FX57	FX6	FX69	FK6
Woofer Size	4"	5.25"	5*7"	6.5"	6*9"	6.5"
Tweeter Size	20mm	20mm	20mm	20mm	20mm	20mm
Frequency Range	70-20KHz	70-20KHz	58-20KHz	58-20KHz	50-20KHz	58-20KHz
SPL@2.83V/1m	87dB	90dB	91dB	91dB	92dB	92dB
Watts RMS	50W	60W	70W	75W	80W	80W
Maximum Power	100W	120W	140W	150W	160W	160W
Peak Power	200W	240W	280W	300W	320W	320W
Impedance	4OHM	4OHM	4OHM	4OHM	4OHM	4OHM
Frame Diameter	3.98"	5.12"	5.5X8.60"	6.54"	6.5"x9.27"	6.54"
Mounting Depth	2"	2.06"	2.24"	2.46"	3.3"	2.46"
Mounting Diameter	3.97"	4.72"	4.96"x7.1"	5.6"	6.25"x8.58"	5.6"



320
PEAK WATTS

280
PEAK WATTS

200
PEAK WATTS



300
PEAK WATTS

240
PEAK WATTS

